



STUD
STAGE 9: L
INCLUDING



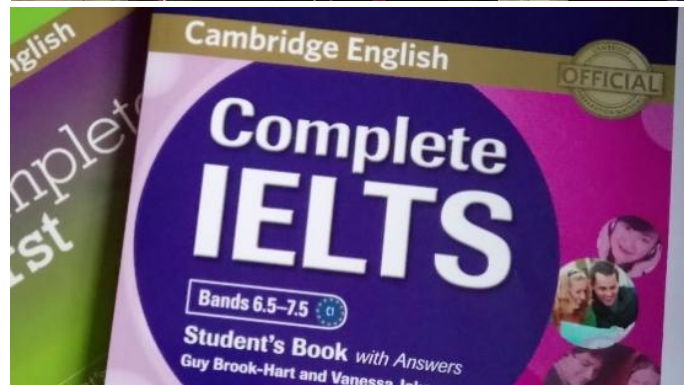
SHORT TERM
STUDY VISA
COURSES AVAILABLE





"I am very pleased with the lessons. I can see my progress in the English language. All the teachers put their heart and their best skills to teach us the correct pronunciation and grammar".

(Teresa from Poland)



"I want to be grateful to you for every day of teaching me because my English is really better because of you. I hope you will be following teaching like that because it is fantastic!"

(Almudena from Portugal)



Welcome to Speakeasy!

Speakeasy is small family-run language school located in Chiswick, a lovely part of West London not far from the city centre.

We opened our doors to foreign students in September 2002. Since then we have taught English to thousands of foreign speakers from all over the world. We have been accredited by the British Council since 2009, and we were the first London-based Callan Method school to be accredited by the Callan Method Organisation. Please note, since October 2016, we no longer sponsor Tier 4 students, but as an accredited educational institution, we still provide courses for international students who wish to enrol on Short Term Study Visas for up to 11 months or less.

As a small school we pride ourselves in providing individual attention and support to students. Our reception door is always open, allowing you to come and speak to us about anything you need during your stay in the UK.

Our website, www.speakeasyschool.co.uk, gives up to date information on the courses available at Speakeasy, and other services we offer to students. If you would like to ask us a question, please contact us and we will be more than happy to help you.


We look forward to seeing you very soon!

Nick & Maggie Jenkins



Our Location

Chiswick is a beautiful residential part of West London, renowned for its numerous bars, cafes and restaurants. It is about 6 miles west of Hyde Park Corner, and situated in a loop of the River Thames south of Acton, with Hammersmith to the east and the lovely area of Kew just a mile or so to the west, with its famous Botanic Gardens. Most people come to Chiswick to admire the 18th century architectural style of Chiswick House and visit the home of the artist William Hogarth. There is also a very pleasant riverside walk that runs along the Thames, with a selection of historic pubs, which are especially popular in the summer months. The School is located on Chiswick High Road, less than 2 minutes walk from Stamford Brook Underground Station. The main road is equally accessible by buses running between Hammersmith, Fulham, Shepherd's Bush, Ealing, Twickenham and Richmond.



How to find us

To get to Stamford Brook Underground Station you need to get on the District Line (Green). It is important to remember that Stamford Brook is located on the Richmond or Ealing Broadway part of the District Line. If you are heading from central London, take any west-bound District Line Train, if it goes to Richmond or Ealing Broadway, then just stay on the train until you reach Stamford Brook, otherwise change at Earls Court for a Richmond or Ealing Broadway service.



We Look After Our Students

“Measures are in place to ensure the safety and security of students on school premises. There is a very caring and friendly atmosphere in the school, and pastoral care is good.”

(British Council, Full report 2017)

Welfare

Whatever you need while you study in London, we can help. Let us know if you have problems with your accommodation or at work; if you need a local doctor or dentist; or even if you are looking for somewhere to practise your faith. From opening a bank account, to applying for your student discount cards (Oyster, ISIC, etc), we'll be happy to assist you in whatever way we can. Detailed information about the services we offer can be found in the Speakeasy Student Handbook available on our website at www.speakeasyschool.co.uk.

Accommodation

We provide an accommodation service for our students with the help of our trusted accommodation agencies, Britannia Student Services Agency and Hosts International. You can choose to live with an English family, in Residence Halls, Flat shares or Hotels. We will be pleased to recommend the type of accommodation that meets your needs and budget and make all reservations on request (see Accommodation Details).



Airport Transfer

We will arrange for you to be met at any of the London airports or mainline stations and ensure that you get to your chosen destination safely. When you book a pick-up service, the driver will be waiting for you in the arrivals area of the terminal carrying a sign with your name on it. Return transfers from the accommodation to the airport/station are also available.

Visa Requirements

Students who require visas for the UK are advised to visit the UK government website: www.ukvisas.gov.uk, or to contact the nearest British embassy, consulate or high commission to check the current visa requirements. . If you wish to apply for a student visa, we are happy to provide you with information and assistance in contacting the appropriate authorities.

"I enjoyed studying here very much. All of the teachers are helpful and kind and I find I have improved a lot. I am more confident now when I speak English."

(Rahma from Saudi Arabia)

Social activities

Although we **do not** organise leisure activities for students, we are always happy to help with ideas on a variety of day trips, walks, shows, parties, etc that you can enjoy every month. For information on day excursions and short breaks you can pick up a copy of Anderson Tours brochure available at our reception; for a programme of sightseeing and theatre events you can refer to the leaflet stand, or check the posters on our information board. For suggestions on what to do after school, visit our facebook page or check the posters on the information board.

Callan Method: *General English & Business English*

*"The Callan Method is a fast way of learning English.
This method allows me to improve my pronunciation and speaking"
(Chloe from France)*

Speakeasy School teaches English using the Callan Method which works fast, is fun to use and can be enjoyed by any student, regardless of their age, nationality or learning ability. It was first developed by Mr Robin Callan in 1960, and is based on the Natural Approach, similar to the way children learn their first language: the students first hear a new word, then imitate what they hear, later see the word written, and finally write it themselves.

The Callan Method comprises of 12 Stages, from beginner to advanced level, and takes an average of 1 year to complete from start to finish. There is an interactive Callan App that accompanies the course.

What makes us different from other schools?

Speed

The Callan lessons are conducted at a very fast speed (240 words a minute), which prevents boredom, makes each student concentrate, stops them from translating in their head, allows them to hear more words repeated more times, and makes it easier for them to understand English outside the classroom. The speed of our lessons also allows us to progress through the Stages of the method, taking you up to the level of the Cambridge English B2 First Exam in less than a year.

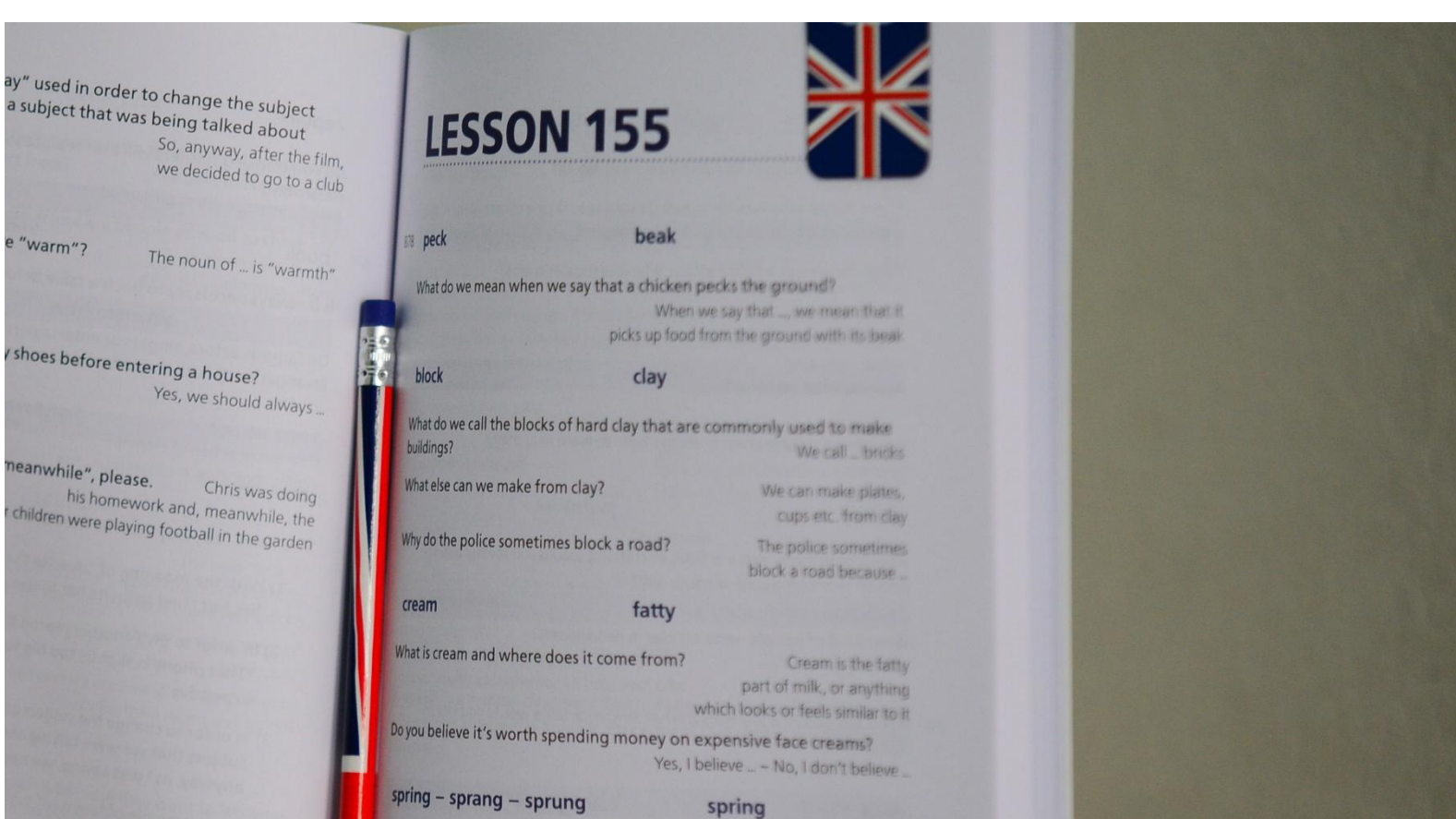
Continuous repetition

The lessons are taught through constant repetition and revision of grammatically correct sentences. By revising everything four, or five times, the Method ensures that the students remember what they learn (usually for the rest of their lives), no matter how poor their memory is.

Constant change of teacher

The Callan teacher changes every hour, so depending on how many hours students study per day, they get taught by two, or three different teachers. The reason for the constant change of teacher is to overcome the boredom of going over the same material lesson after lesson. A change of teacher also helps the students understand different voices and accents.

We offer FREE trial lessons to sample the Method. You can book via our website.



Why the Callan Method?

“Because it’s easier and faster to learn using this method. I like it because they teach us to memorise new words and even grammar. It helps to improve my English, so I can have a simple conversation in English”.

[Valentina from Colombia](#)

“Because it was very helpful for me to improve my poor listening and speaking abilities. Now I can express my opinion more naturally and effortlessly than before.

[Heajung from South Korea](#)

“Because I’m hearing and using the language. I like that the teacher speaks quickly and corrects pronunciation mistakes”

[Augustin from Italy](#)

Exam Preparation Courses

The exam preparation classes are conducted in a traditional method of teaching and include exam techniques, strategies and tips; writing and reading practice as well as extra speaking and listening exercises. They also focus on specific grammar issues, as well as vocabulary, including phrasal verbs and prepositional phrases.

We currently prepare for two exams, Cambridge English: B2 First (FCE) and IELTS.



Cambridge English B2 First: (FCE)

The Cambridge English B2 First is an internationally recognised qualification in English, accepted by many employers and educational institutions. It is set at the upper-intermediate level and covers four main language skills - reading, writing, listening and speaking, as well as assessing grammar and vocabulary.

"I obtained the Cambridge First Certificate thanks to Speakeasy; but more importantly, I could get a job in my profession"
(Mariela from Mexico)



IELTS

The International Language Testing System (IELTS) also assesses English proficiency in all four language skills, but is favoured more by educational institutions (colleges, universities, etc). English-speaking companies and employers, as well as government immigration agencies also rely on IELTS as part of their recruitment or admittance procedures.

"We had a fantastic teacher! We think our English has improved and we're ready to take our IELTS. We know its structure and how to deal with it."
(Stefano & Margherita from Italy)



The Timetable

We teach English to adult students (18+) from all over the world. We are open from 9.30 am until 9.30 pm, Monday to Friday, and closed at weekends, bank holidays, Easter and Christmas.

Students are welcome to start their classes any day of the week, at any time of the year, with a choice of how many hours per day/ per week they wish to study. We run classes in the morning, afternoon and evening in blocks of two, three or four lessons per day.

All our lessons are 50 minutes long with a 10 minute break. Our full timetable is available on our website.





How to enrol

Fill in the application form (available on our website) and deliver, post, or e-mail it to the school. Remember to complete the accommodation/airport transfer section of the application form, if you require accommodation or an airport pickup.

We will contact you (within 24 hours) to confirm how much you have to pay for your course and accommodation/airport transfer if required. We will also request any additional documents we might need from you (visa students).

You can then make the appropriate payment: by cash (in person only), cheque, credit card or bank transfer. Remember to send us evidence of your payment, if you are paying by bank transfer from abroad.

When we have received your payment we will issue you with a Certificate of Enrolment. If you need a visa to enter the UK, you will need to enclose the Certificate with your visa application, or show it to the British Embassy in your country, or an immigration official at your UK port of entry.

We will also contact you to confirm your accommodation arrangements and/or airport transfer if required.

“You helped me a lot with my self-confidence in speaking English! I’ll come back to this school next year! “

(Iza from Poland)



Accommodation Details

Accommodation arrangements for our students are made by Britannia Student Services and Hosts International, both British Council registered agencies.

Homestays

This is the most popular type of accommodation which offers an opportunity to speak English outside the classroom and experience being part of a British home. Our host families are located near stations or bus routes in zones 2, 3 and 4.

Homestay accommodation is available on a half-board (HB), bed and breakfast (BB) or self-catering (SC) basis. The most frequently requested meal plan is half board, which means you receive two prepared meals per day (breakfast and dinner), seven days per week. The bed and breakfast option means that only breakfast is included in your meal plan, and self-catering students must purchase and prepare their own meals.

Halls of Residence

Beaumont Court, Britannia South Bank and Tufnell House, all offer students an independent lifestyle. Arranged through Britannia Student Services, halls of residence provide a high standard of living with furnished bedrooms, modern kitchens, and fun communal areas. They are located primarily in zones 1 and 2, offering single, twin, double and studio rooms.

Halls of Residence are available on a self-catering (SC) basis only.



“The host mother is very kind. She tried to speak to me every morning. She introduced her husband and daughter to me. She not only did my laundry, but also dried it! I was impressed so much!!”

(Kosuke from Japan)



Other Accommodation

Studios and **house/flat shares** offer an independent lifestyle and are more suitable for the long term student. This type of accommodation is provided on a room only basis, and often includes shared kitchen and bathroom facilities. It cannot usually be pre-booked from overseas; we recommend that long-stay students requiring this type of accommodation initially book accommodation in homestays or hostels. We will be pleased to help arrange alternative accommodation for them after arrival. Alternatively, we can recommend a selection of good, centrally located budget **hotels that have been tried and tested by other students**. Please ask us for details.



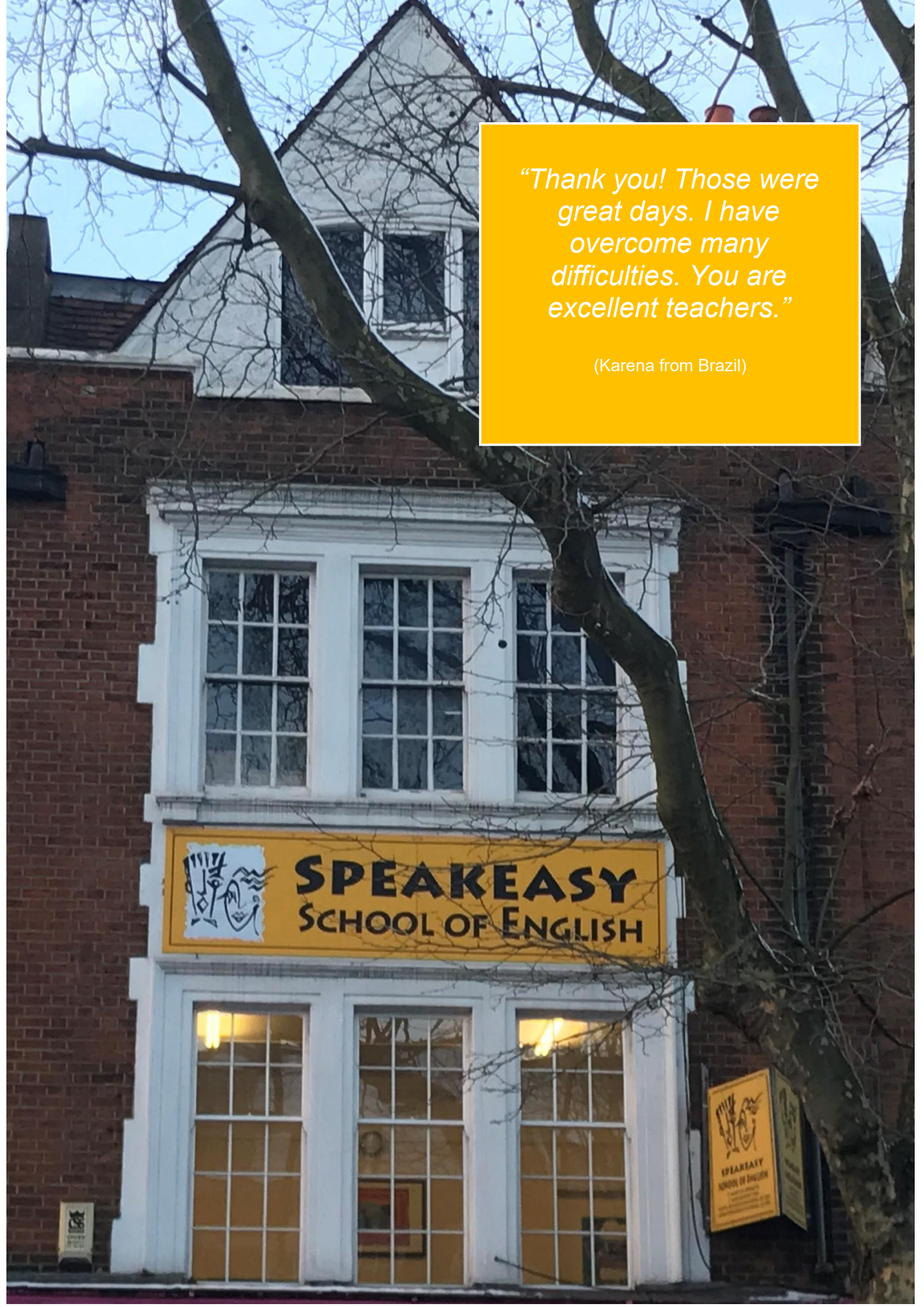
The Student Experience

As a relatively small school, we enjoy an exceptionally close relationship with our students. Our office door is open at all times and we are always happy to offer students any advice and support that they may need during their stay in the UK.

When you come to the end of your course we can help you decide what to do next and assist you in understanding the many different options available for further study in the UK.

“Thank you for your wonderful approach, guidance and precious life lessons. You have been much more than just teachers to me, you have been supportive and motivating. Thank you for everything you have done for us!”

(Abdul from Oman)

The image shows the exterior of a brick building housing the Speakeasy School of English. The building features a prominent yellow sign with the school's name and logo. The sign is illuminated, and the interior lights are visible through the windows. A large tree with bare branches is in the foreground, partially obscuring the building. A yellow text box is overlaid on the upper right portion of the image.

“Thank you! Those were great days. I have overcome many difficulties. You are excellent teachers.”

(Karena from Brazil)

Your invitation

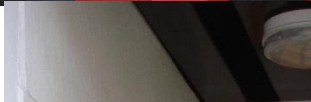
We invite you to come and get a feel for Speakeasy School yourself. We would be delighted to show you round any day of the week (Monday to Friday) or you can book a free trial lesson to sample one of our Callan Method lessons.

To prepare yourself for your visit you can discover more detailed information about any aspect of our school at www.speakeasyschool.co.uk. If you have any specific questions or would like to book a trial lesson, please email us on info@speakeasyschool.co.uk.

A photograph of a station sign for Stamford Brook. The sign is a blue horizontal rectangle with the words "STAMFORD BROOK" in white capital letters. It is mounted on a wall with a large red and white circular logo above it. To the left and right of the sign are green posters for Oyster photocard discounts. Below the sign is a blue priority seat sign with a white icon of a person in a wheelchair and a person with a walking stick, and the text "Priority seat Please offer this seat to those less able to stand".

STAMFORD BROOK





“One of the best things about my experience here in London was this English language school. That involves all of you. I will never forget. In my class, the students form a family. After a hard days’ work, we come to class for learning, but especially... for laughing. Many thanks to all!”

(Laura)





Speakeasy School of English

24 Chiswick High Road
W4 1TE
Tel/WhatsApp 020 8995 8772

Email: info@speakeasyschool.co.uk

www.speakeasyschool.co.uk

<http://facebook.com/speakeasyschool/>

<http://twitter.com/SpeakeasyCallan>

Instagram @ speakeasyschoollondon